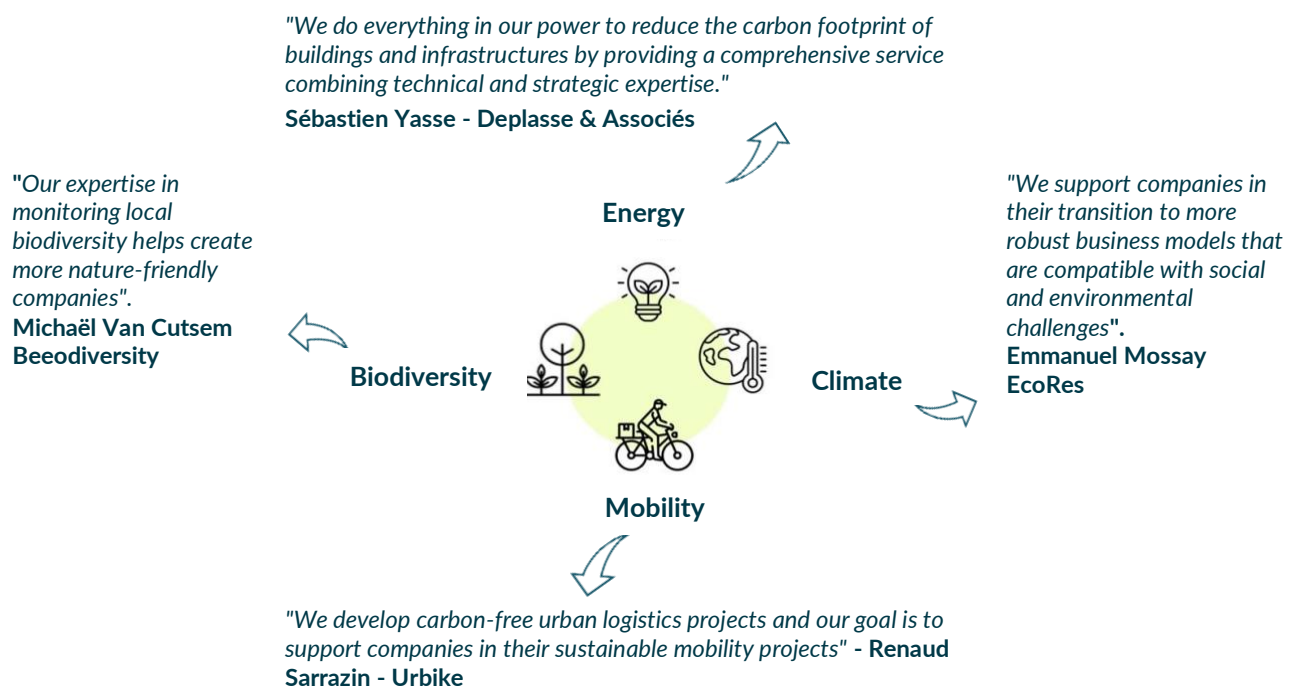


## Boost your company's sustainability with the EVOLVE program

How exposed is your company to environmental risks? What opportunities are out there for boosting your adaptability and resilience? How can your business activities help protect the environment?

The EVOLVE program is developed in collaboration with **partners specializing in sustainability and field actions**: **Beeodiversity**, **Deplasse & Associés**, **EcoRes** and **Urbike**.



Available to any company with more than 100 employees, the EVOLVE program focuses on **actions in the field, with employees as the main drivers**. After carrying out a **deep dive into environmental impacts** and identifying the risks associated with climate issues, the program's partners **identify development opportunities and levers for action to strengthen the company's sustainability**. The next step is driving **staff awareness and engagement** in the design and implementation of field actions linked to CSR strategy and ESG (environmental, social and governance) criteria.

### 1. Evolve, a participative and systemic approach to sustainable business

The economic challenges and opportunities associated with this transition are undeniably complex. That's why EVOLVE brings a **systemic methodology**, combining the analysis of **different types of interdependent indicators** (and which take into account companies' bottom line):

- **Environmental impact indicators** (CO2 emissions, energy consumption, consumption of natural resources, loss of biodiversity, waste production, pollutant emissions, etc.)
- **Ethical and social impacts** (education, poverty, social inequality, etc.)

The approach aims to establish **macro-economic links** between these indicators, in order to draw up a **concrete action plan** enabling companies to **adapt to our rapidly-changing society**. The methodology consists of several iterative phases, carried out in collaboration with the company's staff and management.

## 2. The 3 phases that make up the program

The EVOLVE program is divided into 3 phases:

3. A company-wide audit including analysis by category (mobility, energy, circular economy, climate, food, biodiversity, etc.) and systemic analysis of data, to identify interactions and come up with a diagnosis.
4. Proposals for adapting your business models, taking into account all necessary measures (human and financial resources, strategic priorities, etc.).
5. Drawing up of actions to be undertaken and support in implementing the transition plan.

This support comes across several initiatives:

- Awareness/information sessions on social and environmental issues specific to your company's ecosystem
- Field visits to companies that inspire by example
- Targeted, in-depth training
- Support and experimentation for pilot projects
- Assistance in implementing pilot projects and operational transformation

## 6. Complementary expertise

The EVOLVE program is run by a team of over 150 people with hands-on expertise. They work with you to experiment with impactful actions to find the right mix to make your business more sustainable.

### **BEEODIVERSITY** regenerating value

Experts in projects that drive the deployment of biodiversity, with a clear focus on the development of measurement tools, monitoring, and the implementation of field actions.



Technical and strategic assignment specialists in the field of buildings and infrastructures (renovation, energy consumption, renewable energy production, etc.).



A team of experts helping companies make the transition to a more sustainable regenerative economy (diagnostics, consulting, coaching, etc.).



Cyclo-logistics cooperative, with expertise in sustainable urban logistics (consultancy, research and training and support for companies and organizations to drive cargo bike adoption).

**Contact us**  
**Find out more!**